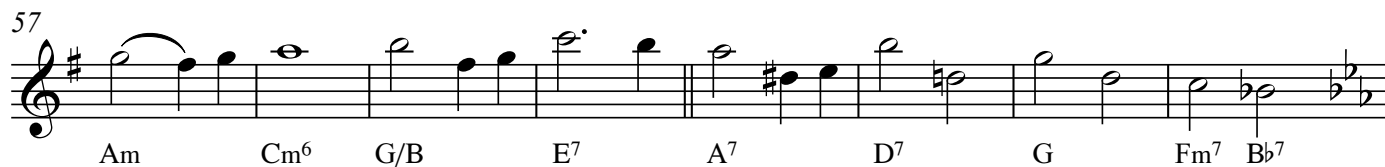
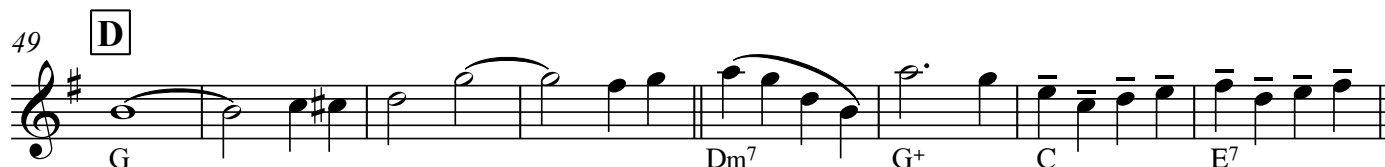
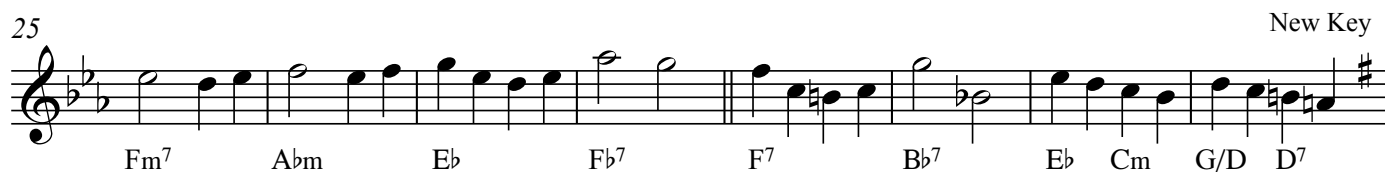
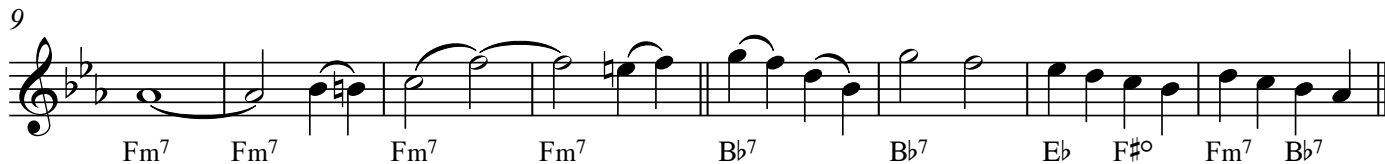


ALAMEDA SWEETIE

Strings & Jazz Band & Vocal

Gunhild Carling

A ♩ = 200

73

Staff 73-80: Treble clef, key signature of three flats (Bb, Eb, Ab). The staff contains eighth and sixteenth notes with accents (^) and slurs. Chord symbols below the staff are Fm, Bb7, Eb, and Bb7.

81

Staff 81-84: Treble clef, key signature of three flats. The staff contains eighth notes with accents (^) and slurs. Chord symbol below the staff is Eb.

85

Staff 85-88: Treble clef, key signature of three flats. The staff contains eighth notes with accents (^) and slurs. Chord symbols below the staff are Bbm7, Eb, and Ab. An 8va line is indicated above the staff.

89

Staff 89-96: Treble clef, key signature of three flats. The staff contains eighth notes and rests. Chord symbols below the staff are Ab, Abm6, Gm7, C7, F7, Bb7, Eb, and Bb7.

97

Last ch **F**

Staff 97-104: Treble clef, key signature of three flats. The staff contains eighth notes and rests. Chord symbols below the staff are Eb, Eb, Eb, Eb, Eb, D7, Fm7, and C7.

105

Staff 105-112: Treble clef, key signature of three flats. The staff contains eighth notes and rests. Chord symbols below the staff are Fm7, Bb7, Eb, F#o, Fm7, and Bb7.

113

Staff 113-120: Treble clef, key signature of three flats. The staff contains eighth notes and rests. Chord symbols below the staff are Eb, Bbm7, Fb7+, Ab, and C7.

121

Staff 121-128: Treble clef, key signature of three flats. The staff contains eighth notes and rests. Chord symbols below the staff are Fm7, Abm6, Eb, C7, F7, Bb7, Bb7, Eb, Abm6, Eb, and EbEbEb.